

70% FASTER THAN TRADITIONAL DESIGN METHODS

4



**ParkCAD** is the world's premier CAD-based software for designing, checking, and editing all types of parking layouts in only minutes. Just select a defined area, and with a click of your mouse, automatically create parking lots that conform to your unique design criteria (i.e. stall configuration, length, and width, aisle width, island radius, etc) using a set of powerful design tools. Now you're free to concentrate on design details instead of tedious calculations and manually drafting each individual row or stall. **That's the advantage of ParkCAD.**

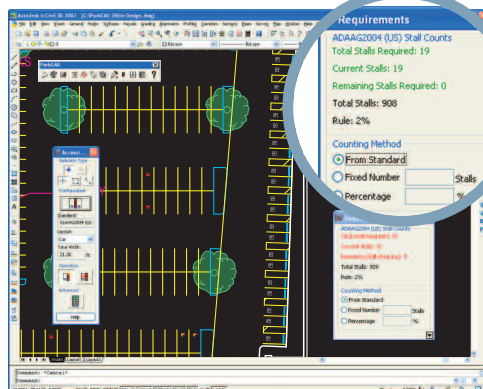
### ParkCAD just got a whole 'Lot Smarter'

Our **SmartL.O.T (Layout Optimization Technology)** is the combination of innovative features (Quantity/Costing Reports; Site Setup; Update Lot; Edit Exclusion Area) for trying out various parking scenarios to maximize your parking yield. Dynamic yet easy to use, these tools give you the flexibility to work more efficiently. Now the intelligence of parking components is kept throughout the life of the project from initial design layout straight through to the final construction phase.

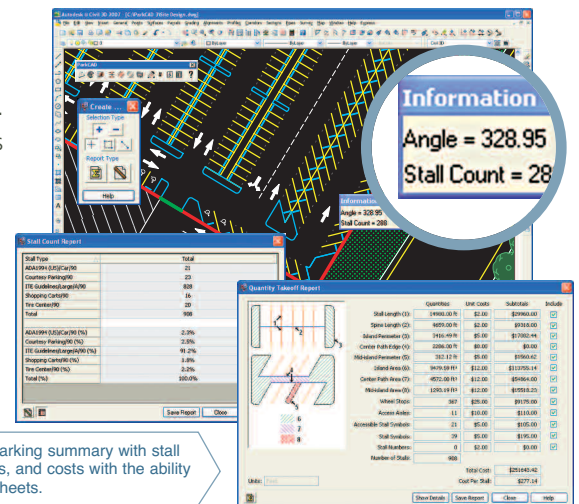
### » PARKING REPORTS TO A HIGHER LEVEL

ParkCAD includes '**Heads Up**' display with ongoing reporting of parking lot information. All reports are linked to the CAD geometry to give instant quantity and cost changes reflecting design modifications during the construction phase.

- The **Stall Count Report** details quantities and percentages for all stall types.
- The **Quantity Takeoff Report** provides lengths, areas, and quantities of parking objects that can be assigned costs for estimates.
- The **Site Setup** ability streamlines reporting by letting you choose a saved group of lots and rows or to determine Accessibility Parking requirements for the entire site.



» Includes international parking and accessibility standards and the ability to input localized parking guidelines.



» Create detailed parking summary with stall counts, percentages, and costs with the ability to export to spreadsheets.

### » LOCAL, FEDERAL, AND ACCESSIBILITY GUIDELINES

ParkCAD comes complete with international parking standards, rules, and symbols including the ability to customize standards to efficiently design to federal, municipal, or specific client requirements. The new **Accessible Stall Requirements** Dialog lets you know if you still need, have met, or exceeded, specific number requirements. Your own **User-Defined Stalls** can be created, saved, and added to the parking design. Each User-Defined Stall type and Accessibility Stall is uniquely displayed and reported to ensure parking design criteria is fulfilled.

Design, check, and edit different parking layout options.

## » NEW STANDOUT FEATURES

- Quantity Takeoff Reporting - details linear footages, areas, and quantities of parking objects with costs assigned for estimates
- Accessibility Parking - standards included, percentage requirements calculated, and stalls placed with ISA symbol and access aisles
- Update Lot - existing lots can be updated reflecting 'on-the-fly' changes to boundary geometry
- Parking Exclusion Area - define areas where no parking should be generated. Ideal for structures, drive aisles, landscape area, and entrance/exit placements
- Site Setup - select a set of parking rows and lots for Accessibility Parking percentage requirements and to streamline reporting
- Distribute Aisle Space - excess drive aisle space can be evenly split across all parking rows using one typical dimension for the lot
- User Defined Stalls - create custom stall standards and assign symbols/colors for specially designated user defined stalls
- Improved interface, button controls, drop down lists, and dialog box transparency

## » DESIGN FEATURES

- Define entrance and exit points for parking lots
- Shift internal rows while generating parking lots
- Dynamic mid-island generation
- Aisle construction lines display minimum distance required between two parallel rows
- Island construction geometry separate from the lot in cases where standard islands can not be created
- Snap parking rows to perimeter edge or other rows according to standards
- Create parking rows dynamically between two selected points or on selected CAD geometry
- Create parking lots within a polygon or bounded area enclosed by lines that represent physical or access boundaries

## » DYNAMIC EDITING

- Swap traffic flows
- Change drive aisles (one or two way)
- Change perimeter or interior row layouts
- Generate single-sided or dual-sided parking rows
- Select multiple elements (i.e. rows, stalls, islands, etc.) and edit to desired specifications
- Create pedestrian interior walkways within a parking row
- Add or remove islands; wheel stops; parking stalls and rows
- Stall numbering - assign incremental numbering for selected rows

## » REPORTING CAPABILITIES

- 'Heads Up' display of running counts of stalls
- Overall quantity and percentage of stall types (large, small, Accessibility, and user defined) within rows, lots, or sites
- Save reports and import into spreadsheets and databases

## » STANDARDS INCLUDE:

### Parking Guidelines

ITE (US) EAR91 (DE)  
 ULI (US) JUS (YU)  
 AIA (US) NZ2890-1(NZ)  
 AS2890-1 (AU) PG3-85 (RSA)  
 ASVV (NL) TFK1991-5 (SE)  
 ASVV 2004 (NL) VEGVESEN1992 (NO)  
 NEN2443 (NL) Vejregler (DK)  
 CSN (CZ) VSS (CH)  
 DB32 (UK)  
 EAR05 (DE)

### Accessibility

ADA1994 (US)  
 ADAAG2004 (US)  
 AFNOR (FR)  
 ASVV2004 (NL)  
 DETR1995 (UK)  
 EAR2005 (DE)  
 JUS (YU)  
 NEN2443-2000 (NL)  
 NZS4121-2001 (NZ)  
 SN640291a (CH)  
 TFK1991-5 (SE)

You can also create your own parking guidelines

## » COMPATIBILITY

- Autodesk® AutoCAD® 2004 – 2014 series of products (except AutoCAD LT)
- Bentley® MicroStation® V8 XM, V8i
- Full support for 64-bit operating systems
- **System requirements:**  
 Workstation: Windows® XP, Vista, Windows® 7  
 Network: Windows® Server 2000, 2003, 2008

## WHAT PARKCAD CAN DO FOR YOU



**SAVES YOU MONEY** Create your parking lots in a matter of minutes, not hours. Get on with your important design work faster instead of using up resources on tiresome parking lot calculations.

**BOOST YOUR EFFICIENCY** Create and assess your parking lots with a variety of tools. ParkCAD reduces your work even further with new powerful features that optimize valuable parking space.

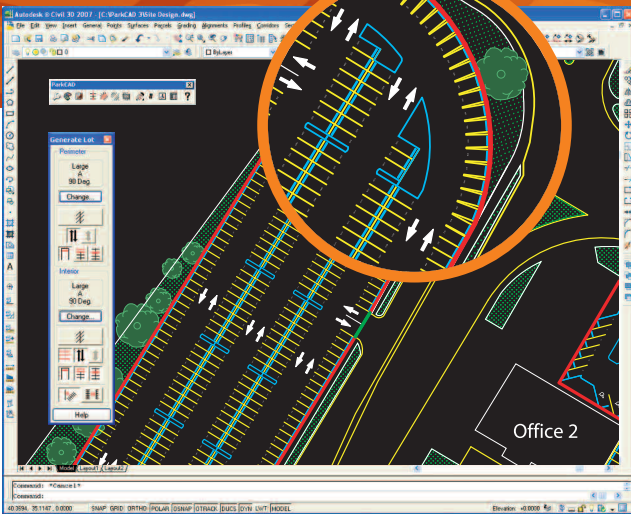
**DESIGN WITH CONFIDENCE** With the SmartL.O.T. ability, ParkCAD keeps the integrity of your parking lot design dimensions along with visual alerts warning of designs that compromise predefined requirements.

## ENTIRE PARKING LAYOUTS DONE IN MINUTES

### » Check out ParkCAD 4.0 in detail

#### DESIGN LOTS THE WAY YOU WANT

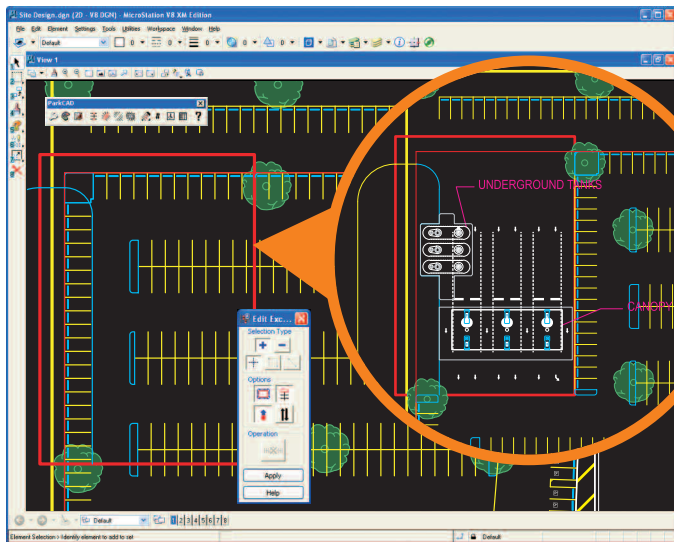
« Create lots by applying standards for parking elements. Choose different row configurations (i.e. - flat, arrow, interlock and herringbone), swap traffic flow direction in drive aisles, add pedestrian center paths or extend/move row ends. Specifications are automatically applied to sizing of drive aisles, mid and end islands, and wheel stop dimensions. The **Lot Generation** tools give you the flexibility to define different stall sizes and angles for interior and perimeter parking rows. And ParkCAD intelligence creates lots around designated driveway entrance/exit points; generates non-uniform end islands for complex parking lot geometry; and shifts internal rows during the parking layout design process.



» Simple and fast. Click and drag generates complete lot design based on standards.

#### PARKING DESIGNS FROM START TO FINISH

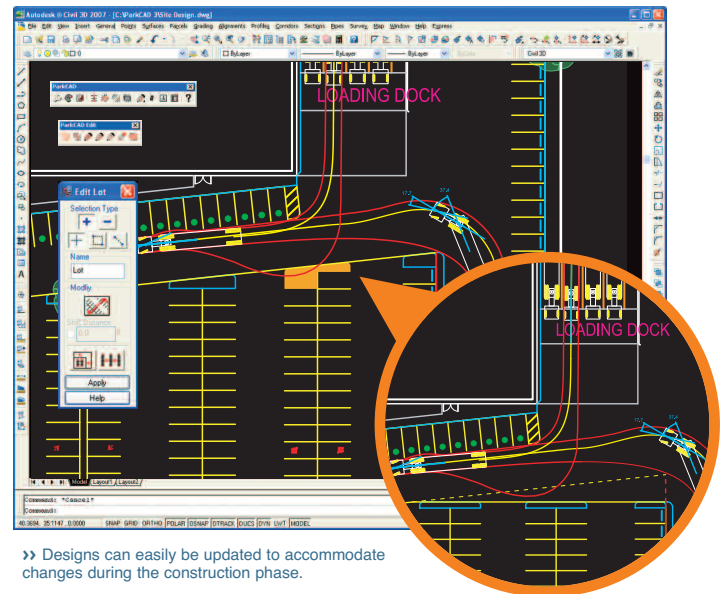
» Take your parking designs from conception right through to the construction stage. ParkCAD's enhanced editing tools provide easier group selection/operation for 'on-the-fly' changes to keep parking objects' intelligence throughout the life of a project. The new **Update Lot** feature allows existing lots to be resized to meet your adjusted boundaries while retaining prior customization. The **Distribute Aisle Space** command places excess perimeter drive aisle space evenly across all internal rows. The new **Edit Row** permits individual parking rows to be extended or trimmed to their intersection complete with connecting island or to have individual rows added to a previously created parking lot.



» Define areas internal to or that span the lot boundaries where no parking should be located.

#### Image Legend

■ Physical Boundary (No Drive) ■ Access Boundary (Driveable) ■ Entrance/Exit Points



» Designs can easily be updated to accommodate changes during the construction phase.

#### DESIGN AROUND WHAT YOU NEED

« The new **Exclusion Areas** feature lets you design simpler lot boundaries and then remove parking by selecting the excluded objects. These objects are closed shapes that can be internal to, or span across, the parking boundary where you do not want parking placed. Typical uses would be to cut a drive aisle through a parking lot, or to identify a structure (building, light stand, etc) inside of the parking field with or without parking around its perimeter.

Download our FREE trial demo by visiting our website at

[www.transoftsolutions.com](http://www.transoftsolutions.com)

Compare and report different angled stalls counts to maximize area





## SEE WHAT USERS HAD TO SAY ABOUT PARKCAD...

"It is a useful tool for layouts. Great for speed."

**Pius Lee, SNC-Lavalin**

"The ability to quickly see various parking layouts based on ITE standards. Can generate multiple layouts in the time it traditionally takes to generate just one."

**Rob McKenzie, The Transpo Group, when asked "What did you like most about the software?"**

"Even if you'll only create one parking lot, this add-on for AutoCAD and MicroStation will be worth it."

**Roopinder Tara, TenLinks.com**

"I like the speed in which one can develop parking stalls and lots"

**Matthew Kolberg, Urban Systems Ltd.**

"Unbelievably comprehensive and easy to use"

**Mike Rosa, RK Engineering Group Inc.**

"Great program that would tremendously help with parking layouts."

**Cosby Wood, Kimley-Horn and Associates Inc.**

"Very beneficial to have the ability to save all of the various parking standards within the program."

**Glenn Froese, Krahn Engineering**

"Real good program for quick concept layouts and space counts"

**Brandon Laxton, Clark Nexsen**

"Simplified method of creating parking layouts."

**David Chan, Aplin Martin & Associates**

### HOW TO CONTACT US

#### **NORTH AMERICA - HEAD OFFICE**

1.888.244.8387 (Toll Free US and Canada only)

Telephone 1.604.244.8387

Fax 1.604.244.1770

**info@transoftsolutions.com**

#### **EUROPE | MIDDLE EAST | AFRICA**

##### **NETHERLANDS OFFICE**

Telephone +31 10 258 78 78

Fax +31 10 258 78 77

**infoEU@transoftsolutions.com**

#### **AUSTRALIA | NEW ZEALAND | ASIA**

1.800.107.106 (Toll Free Australia only)

Telephone +61 2 9387 7115

Fax +61 2 8905 9574

**infoAUS@transoftsolutions.com**

0800 449 662 (New Zealand only)

**infoNZ@transoftsolutions.com**

#### **LATIN AMERICA**

Telephone 1.604.244.8387

Fax 1.604.244.1770

**infoINT@transoftsolutions.com**

To download our software demos or to find out more information about our products, please visit our website at **[www.transoftsolutions.com](http://www.transoftsolutions.com)**

Please note that some products are only available in specific regions and languages.

**ParkCAD is your ultimate choice**